

Jukes & Co

Estate Agents



Northway Road

, Croydon, CR0 6JE

£350,000



This home is in need of some modernisation, it has two double bedrooms, two reception rooms, kitchen, conservatory and an upstairs bathroom. It has double glazed windows and gas central heating.

Northway Road is superbly Road for commuters. East Croydon Station is within easy reach, offering fast and frequent services to London Victoria, London Bridge, and Clapham Junction, as well as Gatwick Airport via the Gatwick Express. Norwood Junction Station is also nearby, providing additional direct routes into Central London and beyond.

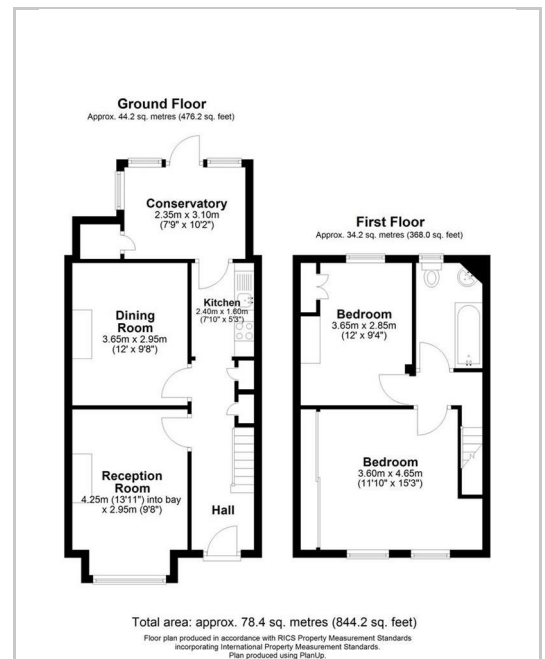
In addition to its excellent transport links, the area is well-served by a number of highly regarded schools and an abundance of local amenities. Croydon Town Centre is just a short distance away, with the lively Boypark Croydon, known for its wide variety of food and drink options. Closer to home, Lower Addiscombe Road offers a charming selection of independent shops, including traditional butchers, fishmongers, cafés, and bakeries.



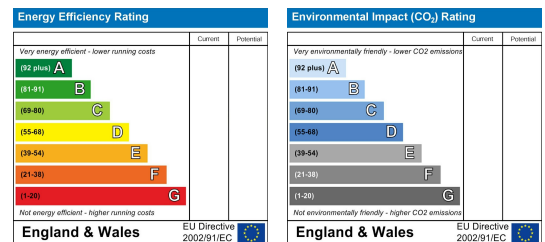
Area Map



Floor Plan



Energy Efficiency Graph



These particulars, whilst believed to be accurate are set out as a general outline only for guidance and do not constitute any part of an offer or contract. Intending purchasers should not rely on them as statements of representation of fact, but must satisfy themselves by inspection or otherwise as to their accuracy. No person in this firm's employment has the authority to make or give any representation or warranty in respect of the property.